

# BatteryShip.com

## 616-0159 Apple iPod Battery Installation Instructions

**PLEASE NOTE:** Patience and care, along with moderate technical and hand tool ability, are required for the successful replacement of an iPod battery. Read all instructions and back up your data **BEFORE** beginning. **Excessive force may result in damage to your MP3 player.** The instructions below come with no warranty or guarantee. By utilizing these instructions, you agree to hold BatteryShip.com blameless and unaccountable for any and all damages, problems, or personal injuries that may or may not arise by your use of these instructions. Replacing your iPod battery may void your Apple warranty.

### Step 1.



Faceplate clip locations:



Beginning 6 centimeters from the top of the iPod on either side, use a pry tool to separate the back iPod case from the front. It is helpful to note that the point of your pry tool needs to go under the metal back cover, not towards the faceplate. One method for creating the initial opening is to use a pry tool with the point facing down, as shown. You can use our included metal flathead **VERY CAREFULLY** if your iPod is attached particularly tightly.

### Step 2.



**CAREFULLY** pry open the iPod case, moving around the iPod from your starting point. There are clips all around the inside of the iPod holding it together. You will need to use the pry tool to unclip each one by pressing them gently inward. You may want to use the metal flathead to maintain your initial opening while prying with a plastic tool.

### Step 3.



Lift off (as shown), but **DO NOT completely disconnect** the back case of the iPod. It should remain connected to the iPod by its connector cable throughout the battery replacement process.

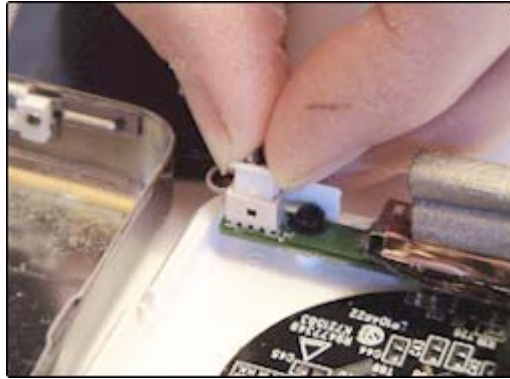
### Step 4.



When you have lifted the back case, you will see the hard drive (which is surrounded by blue rubber). Lift it (with the rubber) gently until you see where it is connected to the iPod with a ribbon and socket. Disconnect it by pulling upward with your thumb and forefinger on the connector, as shown.

(Steps 5 - 7 continued on next page)

## Step 5.



Set aside the hard drive until it is time to reassemble the iPod.

Part of the old battery's power cable may be underneath the piece of the green motherboard that holds the battery connector. Note that the piece of the motherboard does not go all the way to the edge of the iPod. While lifting the battery from its seat, you should be able to work the wires around the side that is not connected and upward, as shown. Once the wires are free, disconnect the old battery from the iPod by pulling upward on the connector (only the very top that is plugged in, NOT on the entire unit) or on the cables above the connector using your thumb and forefinger (as shown) or tweezers.

## Step 6.



**Connect new battery:** Making sure that your battery is facing the right direction (connector wires toward the socket), connect the new battery by pressing the connector at the end of the wires into the socket as shown. Note the location of the prongs in the socket of the iPod and the location of the plugs for the prongs on the battery connector, and connect them accordingly. Do not press too hard or try to force the pieces together – this can result in **PERMANENT DAMAGE** to your iPod. **They will fit easily when correctly aligned.** Place your new battery in its seat, wrapping the battery connector wires under the connector as they were originally in Step 5.

## Step 7.



Reconnect the hard drive to the iPod at the connector as shown. Make sure that the hold switch is aligned correctly, then replace the back cover. **FULLY CHARGE** your new battery before use. (Allow at least three hours. For quality control, we pre-charge many of our batteries, so yours may require less time.)

**PLEASE NOTE:** On very rare occasions, because of the extra cells that extend the life of our batteries, some of our batteries may be slightly too large to fit easily into the pocket meant to hold them in the iPod. **NEVER** try to force a battery in. If the battery doesn't fit, you can use our included Torx T-6 screwdriver to take out the screw on the piece of green motherboard that the battery connector is on to loosen it so that the excess portion of the battery can slide underneath. Make sure to replace the screw once the battery is in place.