

# BatteryShip.com

## EC003 Apple iPod Mini Battery Installation Instructions

**PLEASE NOTE:** Patience and care, along with moderate technical and hand tool ability, are required for the successful replacement of an iPod battery. Read all instructions and back up your data **BEFORE** beginning. **Excessive force may result in damage to your MP3 player.** The instructions below come with no warranty or guarantee. By utilizing these instructions, you agree to hold Batteryship.com blameless and unaccountable for any and all damages, problems, or personal injuries that may or may not arise by your use of these instructions. Replacing your iPod battery may void your Apple warranty.

Included Plastic Flathead Screwdriver



Included Mini Phillips Screwdriver



### Step 1.



Using the included flathead screwdriver, **CAREFULLY** pry off the white plastic top of the iPod Mini. It may help to note that **SLIGHTLY** squeezing the sides of the device can create more space between the white plastic piece and the metal case. It also helps to press toward the metal case rather than the plastic. The white top may be attached with glue.

### Step 2.



Use the included Phillips screwdriver to remove the two screws at the top of the iPod, as shown. Set the screws aside for reassembly. **PLEASE NOTE: Your tools may look different than those pictured.**

### Step 3.



**Bottom  
cover  
clip  
locations:**



Using the same technique as you did removing the white plastic cover at the top of the iPod, remove the white plastic cover at the bottom of the iPod. Note where the clips are located and pry it open where there are no clips (as shown above) to avoid breaking them.

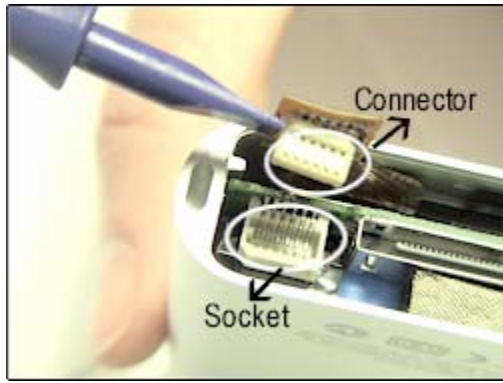
### Step 4.



Use the plastic screwdriver to pry each corner of the metal piece at the bottom of the iPod, as shown, until the entire piece comes off. Set it aside for reassembly.

(Steps 5 - 8 continued on back)

## Step 5.



As shown above, use the plastic screwdriver to VERY GENTLY **unplug** the connector which controls/powers the iPod's wheel/buttons. **Unplug only the connector from the socket.** The connector must remain permanently attached at all times to the flexible cable (circled in white above, connector is whitish on our test iPod). The socket must remain permanently attached at all times to the green motherboard (circled in white above, socket is white on our test iPod).

## Step 6.



Press from the bottom of the iPod to slide the motherboard out of the iPod casing through the top, as shown. Keep the pressure as even as possible – don't press on only one side. If the motherboard seems stuck, DO NOT apply more pressure. Instead, try jiggling it a little as you press upward.

## Step 7.



Disconnect the old battery from the iPod by GENTLY pulling upward on the connector with your thumb and forefinger, as shown, or with tweezers. Do not pull on the wires, only pull on the white connector piece to avoid breaking the wires from the connector. Also, use a finger from your other hand to brace the ivory colored part of the connector which is permanently attached to the green motherboard to avoid damaging the connector seat.

## Step 8.



**Connect new battery:** Making sure that your battery is facing the right direction (connector wires toward the socket), connect the new battery by pressing the connector at the end of the wires into the socket as shown. Note the location of the prongs in the socket of the iPod and the location of the plugs for the prongs on the battery connector, and connect them accordingly. Do not press too hard or try to force the pieces together – this can result in PERMANENT DAMAGE to your iPod. **They will fit easily when correctly aligned.** Place your new battery in its seat.

**Reassemble your iPod** (refer to the above steps in reverse order). Make sure that the hold switch is correctly aligned when you get back up to step 1. **FULLY CHARGE** your new battery before use (allow at least 3 hours - for quality control, we partially pre-charge many of our batteries, so yours may require less time.)

**PLEASE NOTE:** Our tools fit the majority of iPod Minis, but some devices may have different screws installed for various reasons. If our tools do not fit your device, you may have the appropriate tool in a tool kit you already own. You can also check your local hardware or electronics store if you do not have the right tool at home.