

# BatteryShip.com

## LIS1228 Sony Clie PEG-T615C Battery Installation Instructions

**PLEASE NOTE:** Patience and care, along with moderate technical and hand tool ability, are required for the successful replacement of a Clie battery. **Excessive force may result in damage to your PDA.** The instructions below come with no warranty, guarantee, proper, or improper assembly or use. The instructions below come with no warranty or guarantee. By utilizing these instructions, you agree to hold Batteryship.com blameless and unaccountable for any and all damages, problems, or personal injuries that may or may not arise by your use of these instructions. Replacing your Clie battery may void any warranty you have on your Clie. **Please read all instructions and back up your data BEFORE replacing the battery.** If your Clie is a different model number, use these instructions as a reference and consult your owner's manual or a technician if necessary.

Included Phillips Screwdriver



### Step 1.



Remove the five screws around the Clie, as shown, using the included Phillips screwdriver. (Your tool may look different than the picture.) Set the screws aside for reassembly.

### Step 3.

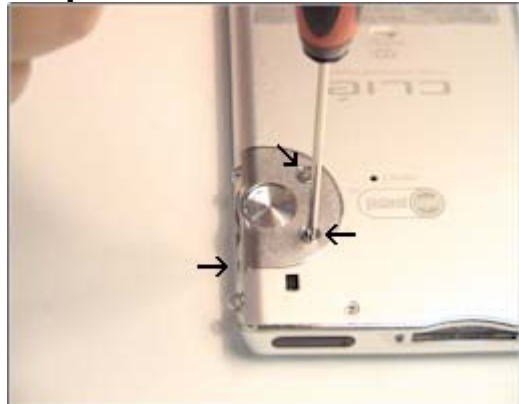


Once the screws have been removed, GENTLY remove the scroll wheel cover and back cover of the Clie by lifting them off, as shown. Use the plastic flathead screwdriver to assist as needed.

Included Plastic Flathead Screwdriver

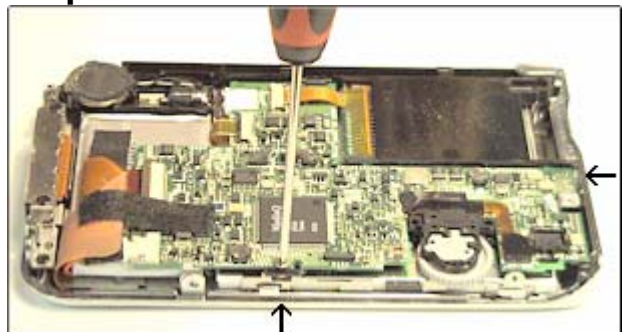


### Step 2.



Remove the three screws around the scroll wheel cover, as shown. Set the screws aside for reassembly.

### Step 4.



Remove the two screws on the motherboard, as shown, to access the battery. Set the screws aside for reassembly. Make sure to keep track of which screws belong with the motherboard.

(Steps 5 and 6 continued on back)

## Step 5.

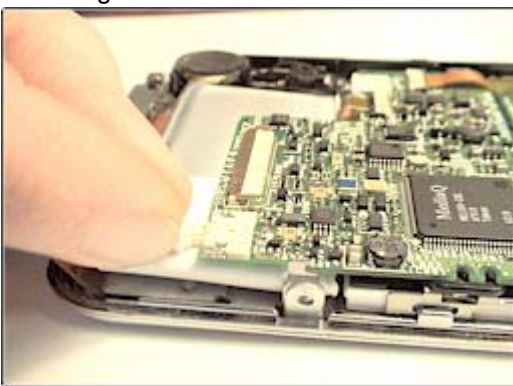


There will be a piece of black tape covering the power cable connectors. Gently lift it using your thumb and forefinger to expose them, taking care not to damage or sever the tape or cables. Then gently remove the clamp that connects the ribbon cable by pulling upward, as shown. If it is taped down, remove the tape.

## Step 6.



**Disconnect the old battery** at the connector by CAREFULLY pulling outward on the connector with your thumb and forefinger or tweezers. Be very sure that you are pulling outward on only the part of the connector that comes out, as shown, NOT on the whole connector seat. **Lift the motherboard** slightly and very carefully to remove the battery. The battery will be glued in, so pry under it GENTLY using the enclosed plastic flathead screwdriver until it comes loose. It is easiest to remove the battery from the bottom of the device, as shown. Take care not to break the old battery while removing it.

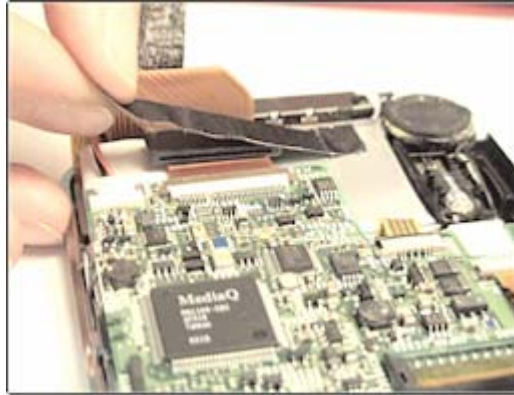
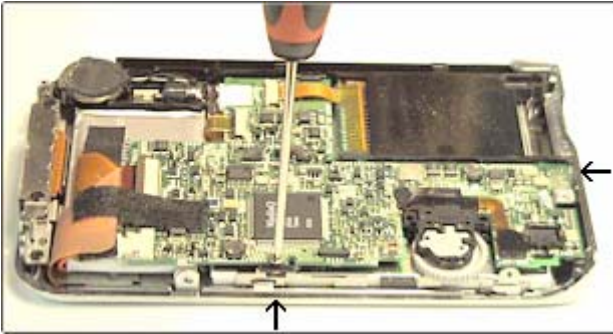


**Making sure that your battery is facing the right direction** (connector towards the bottom of the Clie), connect the new battery by pressing the connector at the end of the ribbon cable into the socket as shown. Note the location of the prongs in the socket of the Clie and the location of the plugs for the prongs on the battery connector, and connect them accordingly. Do not press too hard or try to force the pieces together. They will fit easily when correctly aligned. Position the new battery in its seat as it was previously.

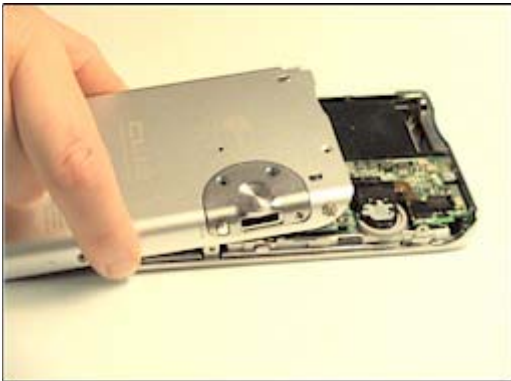
(Step 7 continued on 2<sup>nd</sup> page)

## Continued - LIS1228 Sony Clie PEG-T615C Battery Installation Instructions

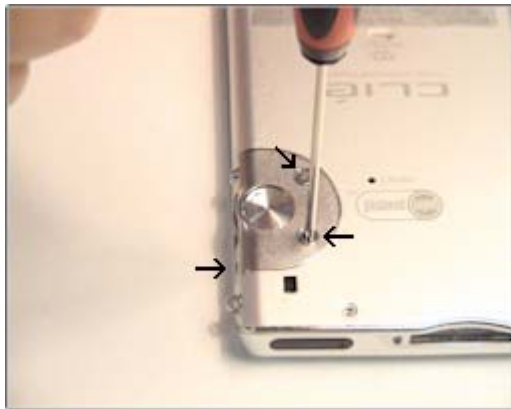
### Step 7.



Replace the motherboard screws as shown above, plus the ribbon cable clamp, and the black protective tape over the ribbon cable clamp as shown (if applicable) and the tape over the power cable connectors, as shown.



Slide the back cover of the PDA back on from the bottom, then put on the scroll wheel cover.



Make certain to replace all eight screws you removed previously. FULLY CHARGE your new battery before use. (Allow at least three hours. For quality control, we pre-charge many of our batteries, so yours may require less time.)

**PLEASE NOTE:** Our tools fit the majority of Clie's, but some devices may have different screws installed for various reasons. If our tools do not fit your device, you may have the appropriate tool in a tool kit you already own. You can also check your local hardware or electronics store if you do not have the right tool at home.