

BatteryShip.com

263897-001 Compaq iPAQ Battery Installation Instructions

PLEASE NOTE: Patience and care, along with moderate technical and hand tool ability, are required for the successful replacement of an iPaq battery. **Excessive force may result in damage to your PDA.** The instructions below come with no warranty or guarantee. By utilizing these instructions, you agree to hold Batteryship.com blameless and unaccountable for any and all damages, problems, or personal injuries that may or may not arise by your use of these instructions. Replacing your iPaq battery may void any warranty you have on your iPaq. **Please read all instructions BEFORE replacing the battery.**

Included T6 Torx Screwdriver



Included Plastic Flathead Screwdriver



Step 1.



BACK UP YOUR DATA before beginning.

Remove the stylus.

Remove the four screws using the included Torx screwdriver or any T6 Torx tool. Set them aside for reassembly.

Step 3.



Pry around the edges of the iPaq until the cover pops open. When this occurs, do not immediately pull the cover all the way off, as the old battery will still be connected to your iPaq by a yellow circuit cable. The old battery will be glued to the back of the iPaq case.

Step 2.



Once the screws have been removed, GENTLY pry open the iPaq case (starting on either side near the bottom where it can be easily pried, as shown) using the included plastic screwdriver. Be very careful, but keep in mind that the iPaq battery cover may be glued on. Some resistance is normal.

Step 4.



Disconnect the old battery by CAREFULLY lifting the white connector end of the yellow circuit cable (where it meets the battery) away from the battery using your fingers, the screwdriver, or tweezers. It can help to place the plastic flathead under either side (left or right) of the connector and twist.

(Steps 5 & 6 continued on back)

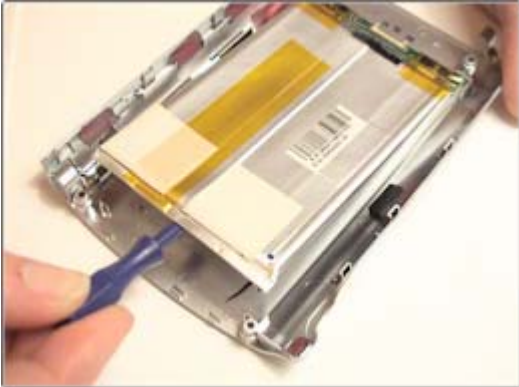
Step 5.



There may be a small piece of orange tape covering the socket on the new battery. Remove this before proceeding. You may also need to remove or fold back a small portion of the white tape surrounding the connector so that the entire connector is exposed, as shown.

Making sure that your battery is facing the right direction (connector towards the bottom of the iPaq), connect the new battery by pressing the connector at the end of the circuit cable into the socket as shown. Do not press too hard or try to force the pieces together. They will fit easily when correctly aligned.

Step 6.



Remove the old battery from the back of the iPaq case, using a screwdriver to pry it out if necessary. Take care not to bend or break the old battery while removing it. Press the back cover of the iPaq on over the new battery and screw the four screws back in. **FULLY CHARGE** your new battery before use. (Allow at least three hours. For quality control, we pre-charge many of our batteries, so yours may require less time.)

PLEASE NOTE: Our tools fit the majority of iPaqs, but some devices may have different screws installed for various reasons. If our tools do not fit your device, you may have the appropriate tool in a tool kit you already own. You can also check your local hardware or electronics store if you do not have the right tool at home.